

Regional Health Needs Inventory June 2017 Update

King County ACH Governing Board



King County

Public Health – Seattle & King County

Department of Community & Human Services

To discuss today

1

The King County ACH Performance Measurement Work Group

2

King County Medicaid population

3

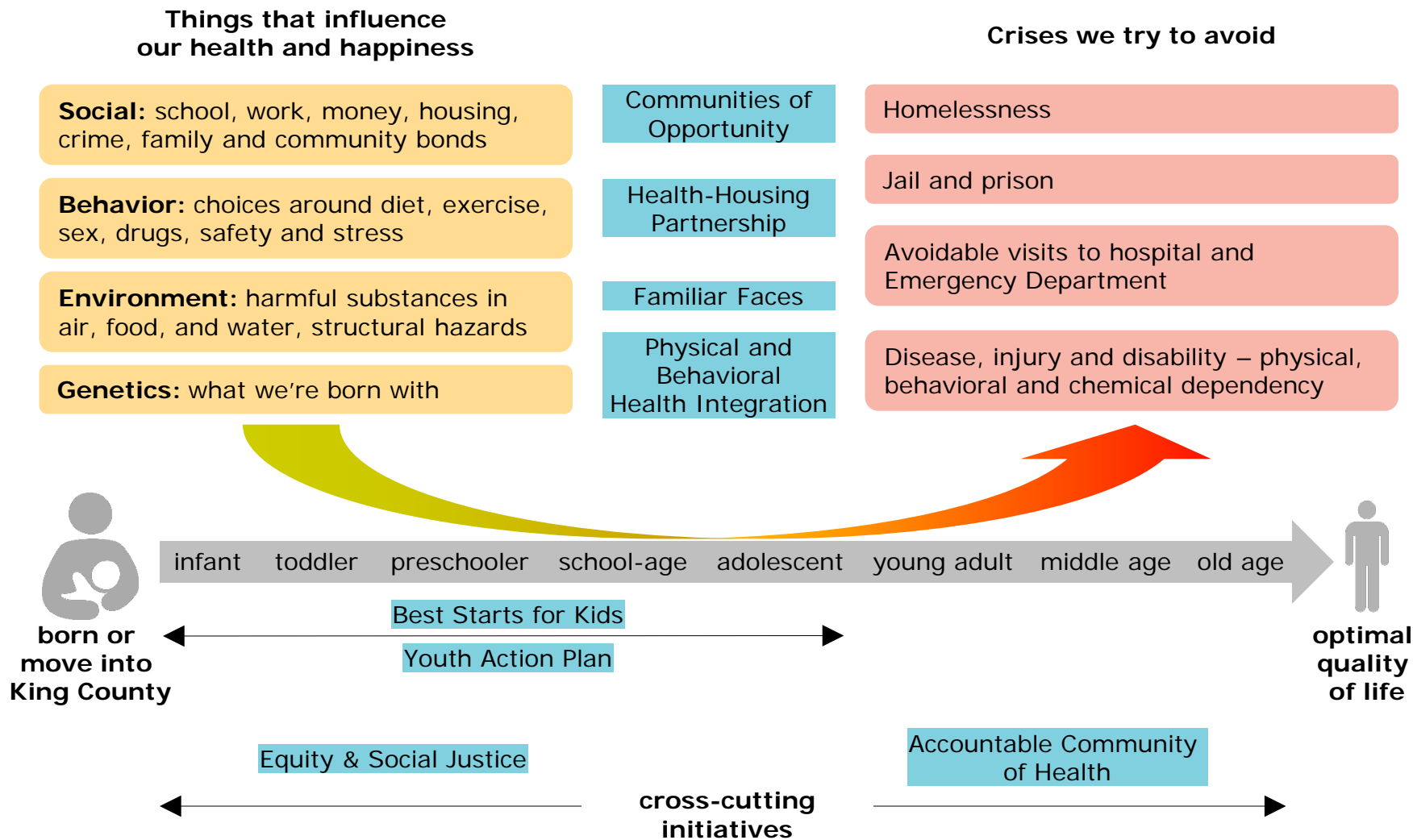
Data and analytics: Strengths and opportunities

4

The path forward

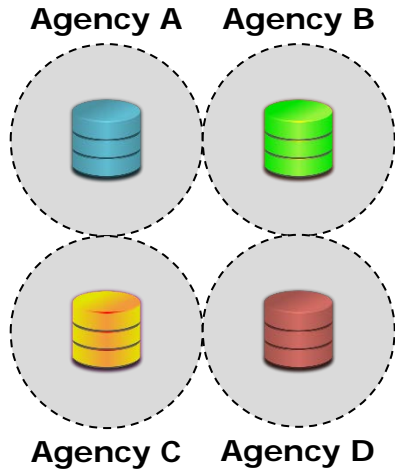
History of the Performance Measurement Work Group

In King County, many initiatives work across sectors to improve health and well-being throughout the life course



Data fragmentation limits our collective ability to improve health & well-being

data fragmentation



data systems are program specific and largely do not talk with each other

impact on health & human services providers



- Providers struggle to:**
- Provide whole person care
 - Avoid care gaps and overlaps
 - Alert other providers to significant events
 - See impact of social determinants of health
 - Understand full context of health

impact on analysts



- Analysts struggle to:**
- Provide actionable and timely information
 - Accurately identify disparities
 - Measure meaningful progress
 - Avoid duplication of work

Performance Measurement Work Group – Data to action

History

Established in June 2015 to meet data, information and evaluation needs of King County ACH

Value statement

- Providing the right people the right information at the right time can promote evidence-based decision making for health policy and programs
- By making available a current, fuller picture of health and well-being at the individual and community level, decision makers will be better able to both gauge and make progress towards our collective goals

Short-term goals

Improved data sharing

Improved data linkage

Improved data dissemination

Data to
action

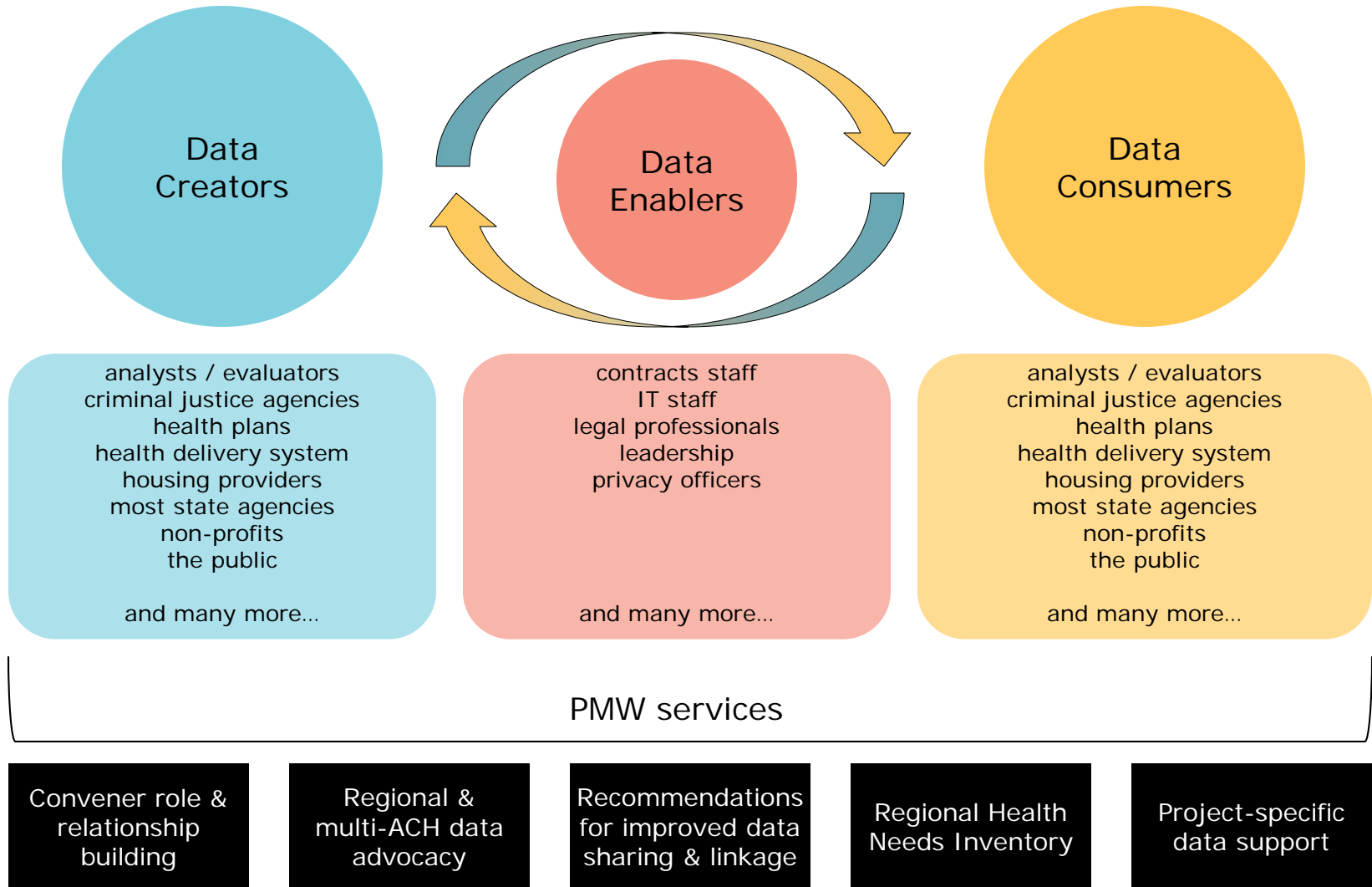
Long-term goals

Improved social determinants of health -
where we live, learn work and play

Triple Aim -
better health & care at lower costs

Equity & social justice

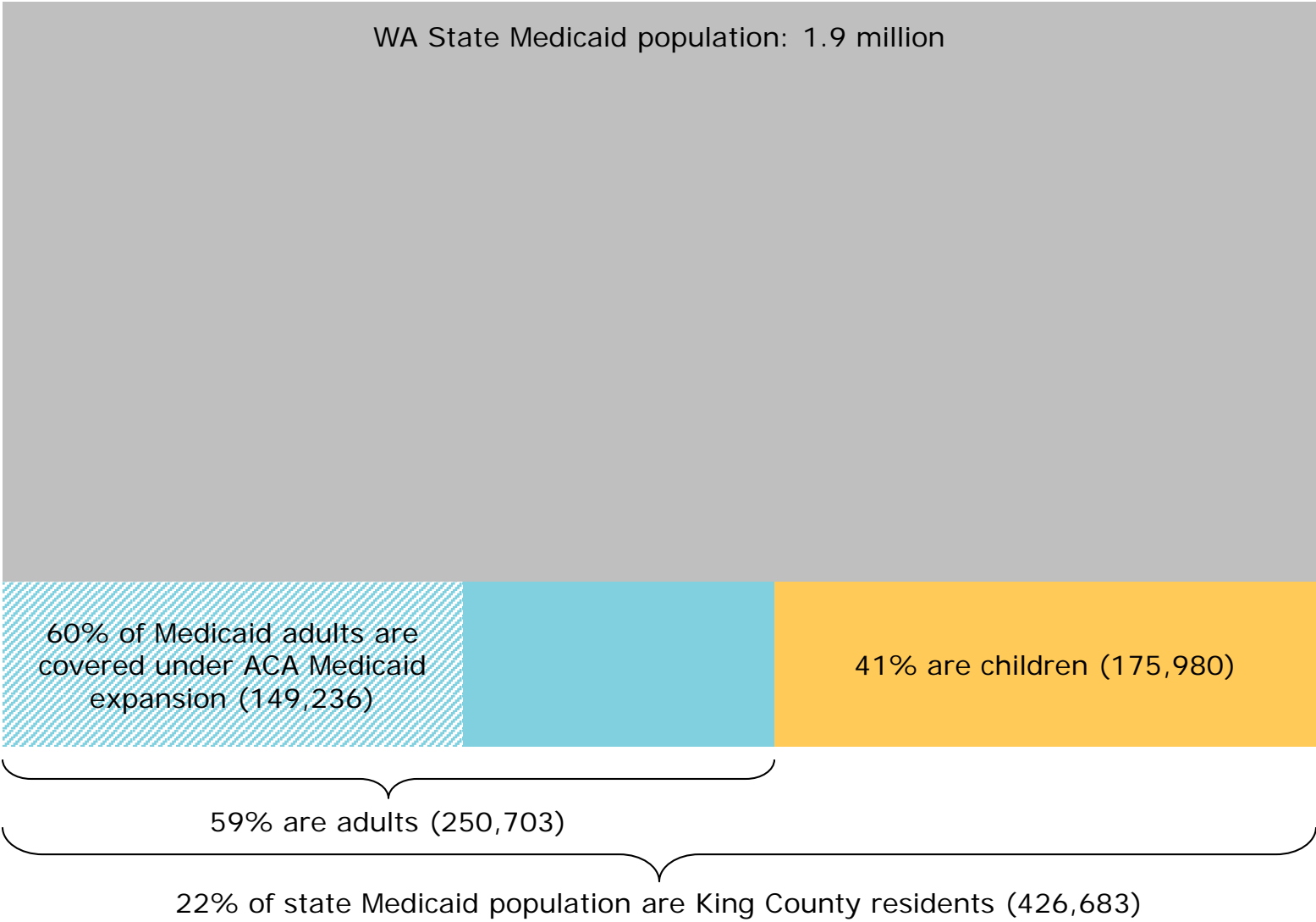
PMW's multi-disciplinary approach to addressing data fragmentation



Data creators, enablers and consumers theme adapted from *Toward a Structure for Classifying a Data Ecosystem*, Seeder A., Smart Chicago, 2014, <http://www.smartchicagocollaborative.org/toward-a-structure-for-classifying-a-data-ecosystem/>

King County Medicaid population

1 in 5 King County residents is a Medicaid member



Medicaid enrollment counts as of April 2017, WA State Health Care Authority

Data and analytics: Strengths and opportunities

Building a dynamic Regional Health Needs Inventory

A needs assessment required of all ACHs to guide the selection, planning, targeting and implementation of Medicaid demonstration projects

Regional Health Needs Inventory (RHNI)

This is an inventory of locally available health data resources. These resources are intended to assist the King County ACH develop [Medicaid Transformation Demonstration](#) projects. Additional resources will be added as they become available. For questions or more information, please contact Eli Kern (eli.kern@kingcounty.gov).

Show 100 entries

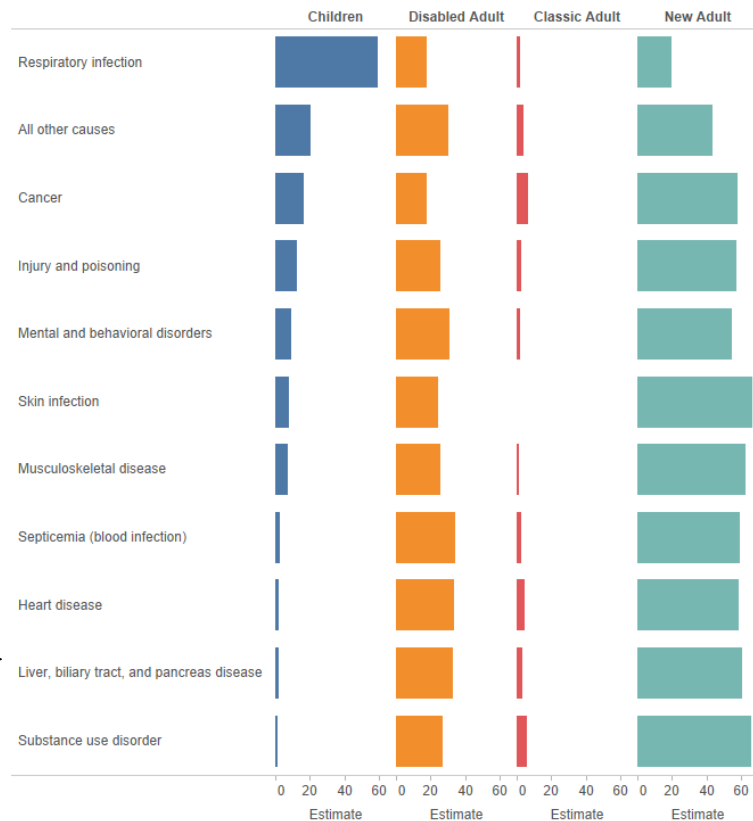
Search: inventory

Data resource	Description	Geography	Population
Health and social service system capacity	Data on the capacity of health care providers and community service organizations. (Supports the ACH Regional Health Needs Inventory)	WA State	Health care workforce
Healthier Washington Data Dashboard	Demographic and health data for the Medicaid and overall populations. (Supports the ACH Regional Health Needs Inventory)	WA State	Overall population and Medicaid insured individuals
Medicaid enrollee health profile	Demographic and health data for the Medicaid population. (Supports the ACH Regional Health Needs Inventory)	WA State	Medicaid population
Overall population health profile	Demographic and health data for the overall population. (Supports the ACH Regional Health Needs Inventory)	WA State	Overall population

Explore leading causes of hospitalization among Medicaid enrollees

Region: King ACH

Region King



King includes 1 county (King County). Prepared by Public Health - Seattle & King County, Assessment, Policy Development & Evaluation, 05/2017. Hospitalizations among Medicaid enrollees with unknown Medicaid coverage type are excluded from this chart, and as such row totals may not sum to 100 percent.

Current priority data gaps for demonstration project planning

Question

Data need

Status update

1

Who is providing care to Medicaid members, how much care, and what types of care?

Medicaid unique clients and claims by billing provider, service type and primary diagnosis

AIM team and DSHS-RDA are working to address this request, but timeline is still to be determined

2

Which Medicaid members have greatest room for improvement on performance measures?

Current/baseline data on pay for performance metrics for each project area, broken down by demographics

AIM team and DSHS-RDA are working to address this request, but timeline is still to be determined

3

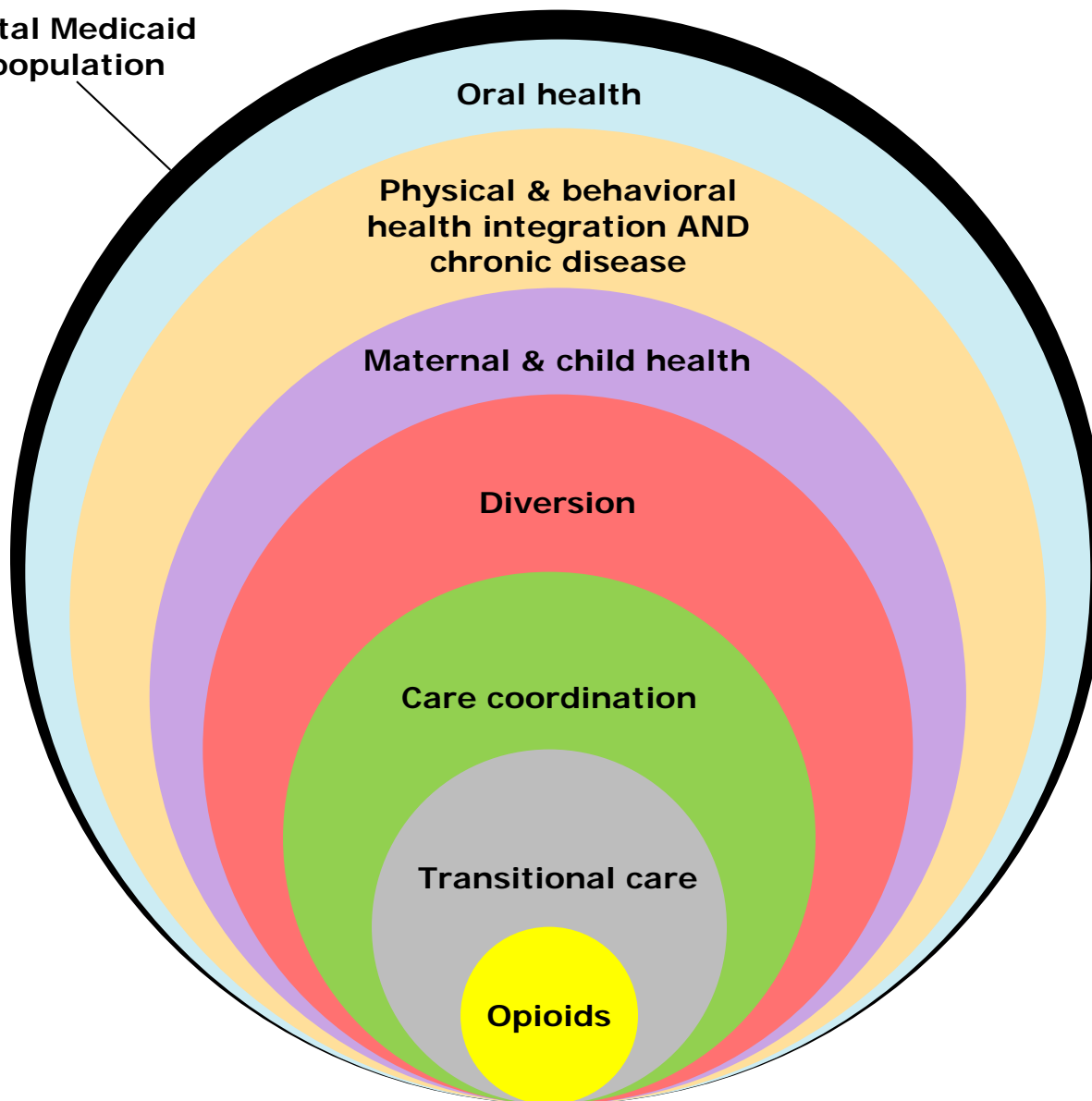
Which major Medicaid providers have greatest room for improvement on performance measures?

Current/baseline data on pay for performance metrics for each project area, broken down by hospital, clinic and/or medical group

Some of these data are available on Community Checkup, but many clinics are suppressed given small numbers of cases

Overlapping target populations and multiple data perspectives

Total Medicaid population



Data perspectives include...

- Community members
- Community-based organizations
- Data privacy officers
- Health and human service providers
- Health insurance plans
- IT professionals
- Population health
- State health and human services agencies

The path forward

Aligning PMW scope of work with Medicaid demonstration

1

Continued need for PMW to convene local partners and build trusting relationships to improve data sharing, linkage and dissemination

2

Provide cross-cutting and tailored data support for planning Medicaid demonstration projects

3

Facilitate multi-stakeholder guidance on how to invest wisely in building data and analytics capacity that meets multiple needs and reflects overlapping target populations

4

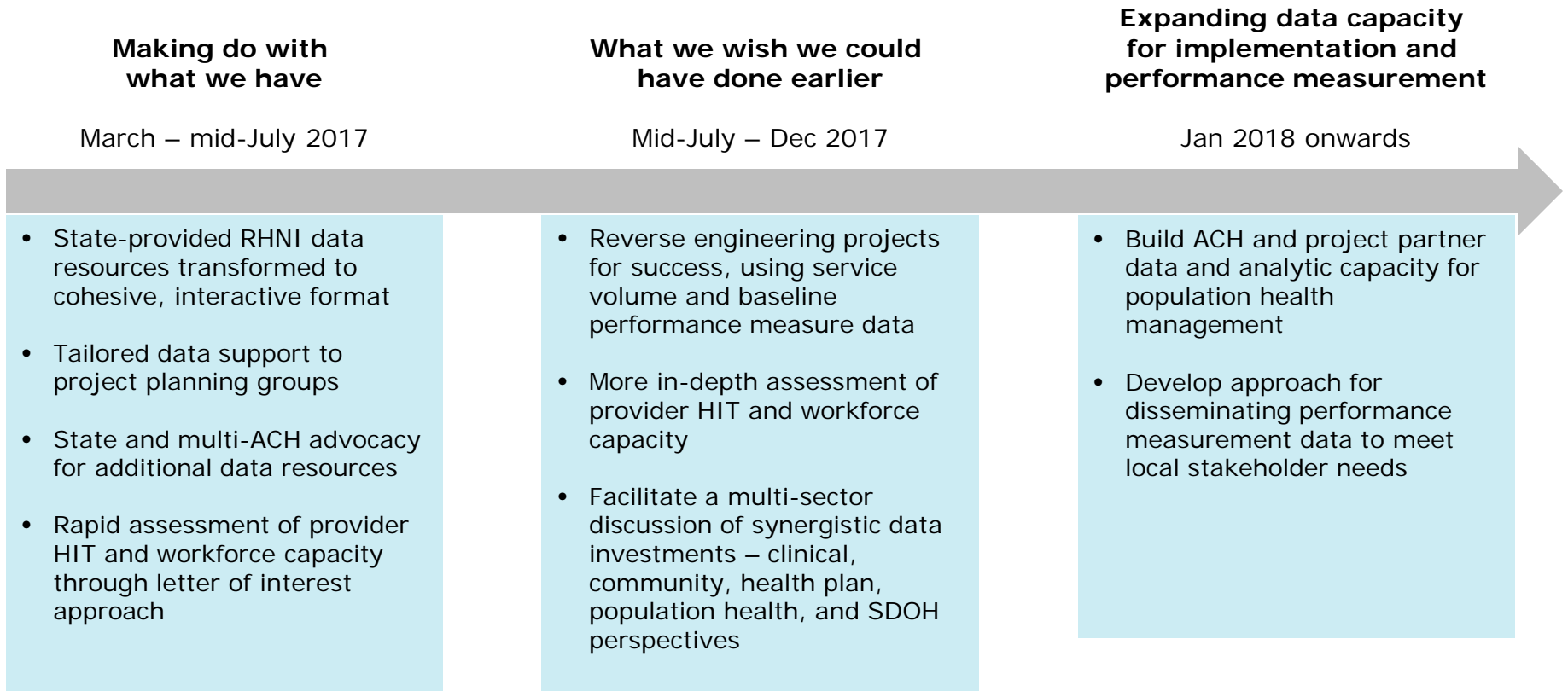
Provide cross-cutting and tailored data support for performance measurement of Medicaid demonstration projects

5

Continued need for regional and multi-ACH advocacy to improve data sharing, linkage and dissemination in King County and beyond

Note: This slide is for discussion only, it has not been approved by the Performance Measurement Work Group nor any other ACH committee.

Towards a *realistic* timeline for data activities to support Medicaid demonstration



Note: This timeline is for reaction and discussion only, it has not been approved by the Performance Measurement Work Group nor any other ACH committee.

For more information...

Eli Kern MPH RN | Epidemiologist
Assessment, Policy Development & Evaluation
Public Health - Seattle and King County
Phone: 206.263.8727 | Email: eli.kern@kingcounty.gov

Explore the PMW: www.kingcounty.gov/pmw

Explore Regional Health Needs Inventory: <https://goo.gl/j5eJav>

King County Accountable Community of Health

Medicaid Demonstration Project Planning **DRAFT**

Project	Community Learning Sessions	Design Team	Support Staff
REQUIRED			
Physical & Behavior Health Integration	2/21 Learning Session 5/8 Learning Session	Yes – recruiting from existing Design Committee	Liz Arjun Elizabeth.Arjun@Kingcounty.gov Data: Debra Srebnik
Opioid Use as a Public Health Crisis	2/27 Learning session Design group meeting weekly	Yes – subgroup from existing Heroin and Opioid Task Force	Steve Gustaveson Steve.Gustaveson2@kingcounty.gov Data: Julia Hood Laurie Sylla
Care Coordination	4/19 Learning Sessions	Forming now	Betsy Jones Betsy.Jones@kingcounty.gov Data: Domin Chan
Diversion	5/5 Learning Session	Yes – subgroup of Familiar Faces Steering Committee for jail related pieces, EMS subgroup	Travis Erickson – Jail / EMS Travis.Erickson@kingcounty.gov Data: Genevieve Rowe
Transitional Care	3/23 Learning Session	Yes - starting with by sub-issue discussions re: <ul style="list-style-type: none"> - <i>Hospitals</i> - <i>SMI</i> - <i>Jail Population</i> 	Kirsten Wysen – hospitals Kirsten.Wysen@kingcounty.gov Data: Domin Chan
Chronic Disease Management & Prevention	4/3 Learning Sessions	Yes	Marisel Mehdipour Torres Marisel.TorresMehdipour@kingcounty.gov Data: Eli Kern
Reproductive, Maternal & Child Health	6/6 scheduled	Yes – Reproductive Health Council for RH Discussing with BSK partners for MCH	Lee Che Leong – RH LCLEONG@kingcounty.gov Data: Aley Joseph
Oral Health	3/8 Learning Sessions	WDSF leading	Lee Che Leong LCLEONG@kingcounty.gov Data: Eli Kern

To learn more about the projects visit: www.kingcounty.gov/ach Click on link to project planning meetings and sign up to receive updates and information.

For more information contact: Ingrid McDonald, Ingrid.McDonald@kingcounty.gov